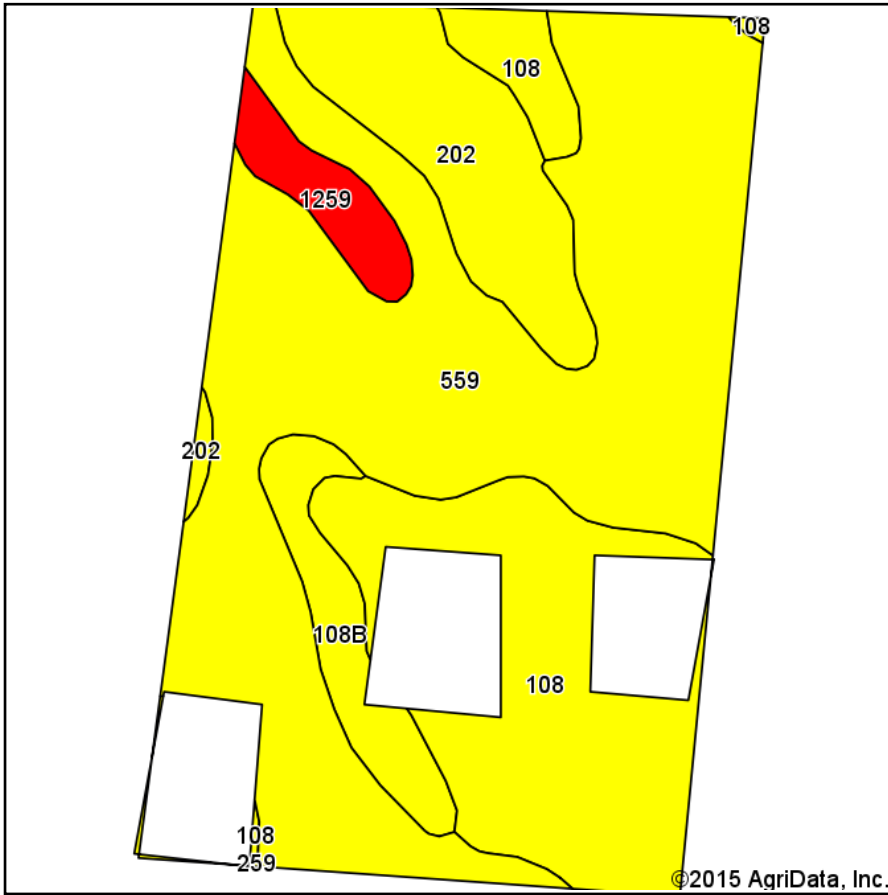
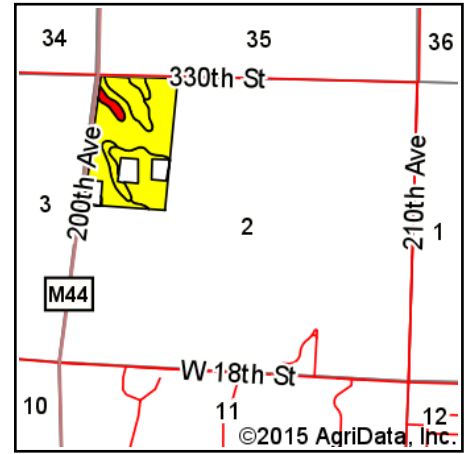


# Soils Map-CSR2



Soils data provided by USDA and NRCS.



State: **Iowa**  
 County: **Clay**  
 Location: **2-96N-37W**  
 Township: **Riverton**  
 Acres: **57.75**  
 Date: **10/5/2015**

**MIDWEST LAND**  
 & REAL ESTATE, INC.  
 MANAGEMENT  
 712-262-3110

Maps Provided By:



## Area Symbol: IA041, Soil Area Version: 22

Code	Soil Description	Acres	Percent of field	CSR2 Legend	Non-Irr Class *c	CSR2**	CSR
559	Talcot clay loam, 32 to 40 inches to sand and gravel, 0 to 2 percent slopes	32.58	56.4%		IIw	52	65
108	Wadena loam, 24 to 32 inches to sand and gravel, 0 to 2 percent slopes	12.98	22.5%		IIs	55	52
202	Cylinder loam, 24 to 32 inches to sand and gravel, 0 to 2 percent slopes	6.98	12.1%		IIs	59	60
108B	Wadena loam, 24 to 32 inches to sand and gravel, 2 to 5 percent slopes	3.20	5.5%		Ile	52	47
1259	Biscay clay loam, depressional, 0 to 1 percent slopes	2.01	3.5%		IIIw	13	49
<b>Weighted Average</b>						<b>52.2</b>	<b>59.9</b>

Area Symbol: IA041, Soil Area Version: 22

\*IA has updated the CSR values for each county to CSR2.

c: Using Capabilities Class Dominant Condition Aggregation Method

Soils data provided by USDA and NRCS.